

CREPE PAPER FLOWER FOUNDATION SERIES

Studio  
*Technique*  
*Cheat*  
Sheets

LIA GRIFFITH®

## Lia Griffith Crepe Paper



- Also called **DOUBLETTE**, Duplex, and Gloria
- Perfect for flatter or larger petals that need **LESS STRETCH**
- Paper has a smooth, **VELVET-LIKE FINISH** with two layers of thickness
- Each side has a slightly **DIFFERENT SHADE**, giving depth to petals
- You can make double-sided or **LAMINATED** crepe paper by fusing 2 layers of extra-fine



- **130% STRETCH** with a smooth, fabric-like texture
- Perfect for **DELICATE PETALS** with a transparent look and lighter texture
- Fuse 2 layers together for **DIY** double-sided crepe paper with fusible web
- Glue thin wire at center of petals or leaves to **ADD STRUCTURE**



- **250% STRETCH** with no machine lines
- Perfect for large flowers and heavier petals as it **HOLDS SHAPE** well
- Also called floristic crepe paper and is **GREAT FOR BEGINNERS**
- Paper has deeper grooves, giving additional **STIFFNESS AND TEXTURE**

# Layering for Hand Cutting

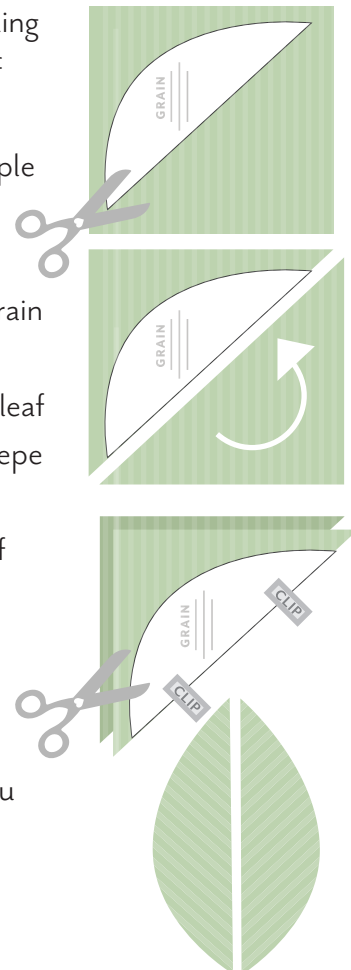
MAXIMUM LAYERS FOR HAND CUTTING CREPE PAPER		
EXTRA - FINE	DOUBLE - SIDED	HEAVY
4 - 6 LAYERS	4 LAYERS	2 - 3 LAYERS

## Angle Cuts

Cutting a half petal or leaf at an angle on the crepe, then gluing centers together over a wire spine, is an excellent method of using the pattern of the grain and the shape of the angle to create beautiful, realistic petals and leaves. Here are my simple steps to cutting V-shaped petals and leaves.

1. Place your template on the crepe paper, matching the grain line mark with the grain line of the crepe
2. Trim the paper to be large enough for a second petal or leaf in the negative space and clip your template onto the crepe
3. Cut along the angled straight line of the template
4. Rotate the loose piece of crepe to align with the angle of the first, matching grain lines
5. Clip into place and complete cut of two layers

**PRO TIP:** If you are cutting double-sided crepe paper, cut a matching set starting with the other side/color facing up. You will then have two matching sets.



# CREPE PAPER FLOWER FOUNDATION SERIES

## Cricut Cut Settings

**CRICUT MAKER (ONLY)**  
ROTARY BLADE



EXTRA-FINE CREPE PAPER	
SETTING	PRESSURE
CREPE PAPER	DEFAULT - MORE

DOUBLE-SIDED CREPE PAPER	
SETTING	PRESSURE
COTTON	DEFAULT - MORE

HEAVY CREPE PAPER	
SETTING	PRESSURE
DENIM OR COTTON	MORE

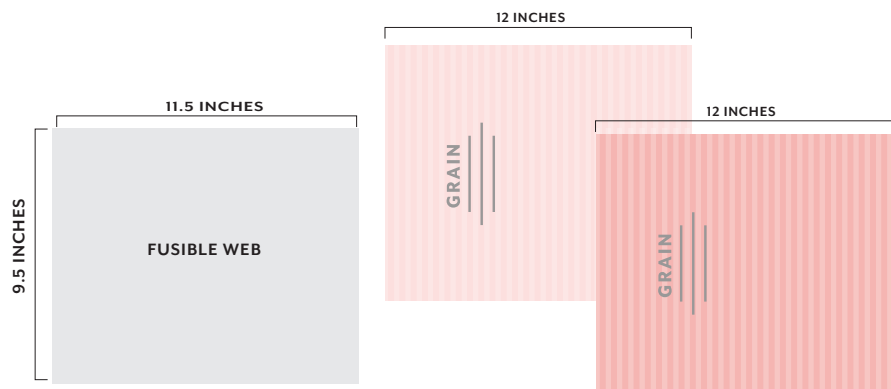
*NOTE: These settings may vary for each machine, blade use, and software updates.  
We recommend you test cut a small area before cutting a full mat of material.*

# DIY Double-Sided Crepe Paper

You can make custom double-sided crepe paper by laminating two pieces of extra-fine crepe paper with fusible web. For this process we recommend the web we have sourced and sell in our shop, Felt Paper Scissors, as it is the perfect weight for this process.

## LAMINATING CREPE PAPER

1. Cut two matching sheets of crepe paper with aligned grain lines.
2. Cut a piece of fusible web slightly smaller than your crepe paper.
3. Place the web between the two sheets of crepe paper, ensuring that the web is not peeking out of any edges. If needed, cover your edges with strips of plain paper or a pressing cloth to ensure you do not transfer the web to your iron or ironing surface.
4. Using a dry iron or Easy Press at 350-400 degrees Fahrenheit and an ironing board or tabletop ironing mat, press and heat the whole surface of the paper and web for 30-45 seconds. I recommend moving your iron to keep it from burning your paper.
5. Once cool, test the edge of your crepe paper to confirm complete fusion. If you see your layers pull apart, heat crepe layers again until fused.



# A N A T O M Y O F A F L O W E R

PISTIL

*stigma*

*style*

*ovary*

STAMEN

*anther*

*filament*

PETAL

SEPAL

STEM

